

**Anti-Mindin Antibody**  
**Rabbit polyclonal antibody to Mindin**  
**Catalog # AP61393****Specification**

---

**Anti-Mindin Antibody - Product Information**

Application	<b>WB</b>
Primary Accession	<a href="#">Q9BUD6</a>
Other Accession	<a href="#">Q8BMS2</a>
Reactivity	<b>Human, Mouse, Rat</b>
Host	<b>Rabbit</b>
Clonality	<b>Polyclonal</b>
Calculated MW	<b>35788</b>

**Anti-Mindin Antibody - Additional Information****Gene ID** 10417**Other Names**

DIL1; Spondin-2; Differentially expressed in cancerous and non-cancerous lung cells 1; DIL-1; Mindin

**Target/Specificity**

Recognizes endogenous levels of Mindin protein.

**Dilution**

WB~~WB (1/500 - 1/1000)

**Format**

Liquid in 0.42% Potassium phosphate, 0.87% Sodium chloride, pH 7.3, 30% glycerol, and 0.09% (W/V) sodium azide.

**Storage**

Store at -20 °C. Stable for 12 months from date of receipt

**Anti-Mindin Antibody - Protein Information****Name** SPON2**Synonyms** DIL1**Function**

Cell adhesion protein that promotes adhesion and outgrowth of hippocampal embryonic neurons. Binds directly to bacteria and their components and functions as an opsonin for macrophage phagocytosis of bacteria. Essential in the initiation of the innate immune response and represents a unique pattern-recognition molecule in the ECM for microbial pathogens (By similarity). Binds bacterial lipopolysaccharide (LPS).

**Cellular Location**

Secreted, extracellular space, extracellular matrix

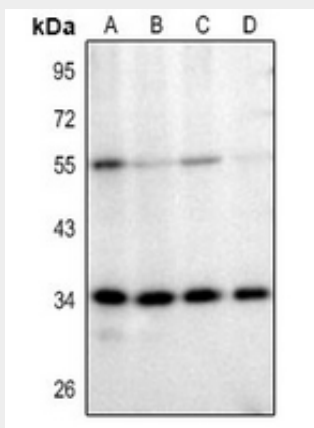
**Tissue Location**

Expressed in normal lung tissue but not in lung carcinoma cell lines.

**Anti-Mindin Antibody - Protocols**

Provided below are standard protocols that you may find useful for product applications.

- [Western Blot](#)
- [Blocking Peptides](#)
- [Dot Blot](#)
- [Immunohistochemistry](#)
- [Immunofluorescence](#)
- [Immunoprecipitation](#)
- [Flow Cytometry](#)
- [Cell Culture](#)

**Anti-Mindin Antibody - Images**

Western blot analysis of Mindin expression in PC12 (A), LOVO (B), SGC7901 (C), HEK293T (D) whole cell lysates.

**Anti-Mindin Antibody - Background**

KLH-conjugated synthetic peptide encompassing a sequence within the center region of human Mindin. The exact sequence is proprietary.